

UofSC



_COMD Newsletter

October 2020

Top Articles:



[Speech-language pathology student wins national award, pursues career in auditory verbal therapy](#)



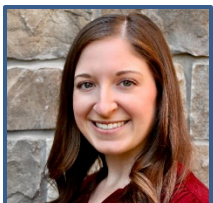
[I Am Public Health: Natalie Hiron](#)



[Study aims to understand effects of COVID-19 on the brain, cognition and language processing](#)



[COMD Chair Jean Neils-Strunjas elected Fellow of American Speech-Language-Hearing Association](#)



[Master of Speech Pathology graduate pursues career working with children to help them thrive](#)

Announcements:

The UofSC_COMD Ph.D. Student and Postdoc Proseminar is designed to promote community and interactions between COMD doctoral students, postdoctoral researchers, and faculty members that extend beyond the mentor/mentee lab experience. This Fall's topics include(d):

9/18, 2pm	Telling your story to different audiences
10/16, 2pm	Budgets for grants and startup packages
11/20, 2pm	Writing (more detail TBD)
12/11, 2pm	Student/Postdoc chosen topic (TBD)





[Jean Neils-Strunjas brings interprofessional focus to new role as COMD chair](#)



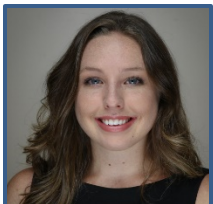
[Breakthrough Star: Krystal Werfel](#)
Public health researcher connects the dots between hearing impairment, language development



[Public health graduate to continue Arnold School education studying speech language pathology](#)



[Kenn Apel wins Honors of the Association award from South Carolina Speech-Language-Hearing Association](#)



[Communication sciences and disorders doctoral student leads development of top 10 paper](#)

Clinical faculty member Dr. Dakota Sharp recent started an audiology-focused podcast worth ASHA CEUs with SpeechTherapyP D.com titled "On the Ear". Catch his latest episode with fellow UofSC_COMD faculty member Dr. Krystal Werfel wherever you listen to podcasts.

UofSC_COMD welcomed a new department chair, Dr. Jean Neils-Stunjas in July. Dr. Neils-Strunjas studies development of cognition and communication across the age span, including diseases of aging that result in dementia. She explores methods to slow the progression of dementia through interventions provided by interprofessional teams.

UofSC_COMD congratulated Dr. Kenn Apel, on his retirement in June. Dr. Apel joined the department as Professor and Chair in 2012 and was recently named as a Distinguished Professor.

* Recent Grants and Publications that follow are from March - September

Faculty members are **bolded**

Mentees are underlined



Recently Awarded Grants and Awards*:

Anna Ehrhorn (doctoral student), SSSR Taylor and Francis Travel Award, 2020: \$500.

Julius Fridriksson, Principal Investigator, National Institute on Deafness and other Communication Disorders, *Center for the Study of Aphasia Recover (C-STAR)*, renewed 2021 - 2026: \$12,500,000.

Jessica Klusek, Principal Investigator, National Institute on Aging, *The FMRI Premutation Genotype and Age-Related Cognitive-Linguistic Decline*, Administrative Supplement to R21DC017804, April 2020 – March 2021: \$244,237.

Peyton Nielsen (undergraduate student), **Krystal Werfel** (faculty mentor), University of South Carolina Honors College Exploration Grant, *Language and Literacy Development of Children with Hearing Loss: The Importance of Language Sample Analysis*, 2020: \$1500.

Krystal Werfel, Principal Investigator with Emily Lund (Texas Christian University), University of South Carolina Office of the Vice President for Research, COVID-19 Research Initiative, *Evaluating the Effects of Embedding Physical Activity in Virtual Vocabulary Learning for Children with Hearing Loss*, May – December 2020: \$24,230.

Recent Publications*:

Aho, C., & **Werfel, K. L.** (2020). An exploration of early spelling in kindergarten children with hearing loss. *Language, Speech, and Hearing Services in Schools*, 1-13.
https://doi.org/10.1044/2020_LSHSS-20-00041

Behroozmand, R., Johari, K., Bridwell, K., Hayden, C., Fahey, D., & **den Ouden, D. B.** (2020). Modulation of vocal pitch control through high-definition transcranial direct current stimulation of the left ventral motor cortex. *Experimental Brain Research*. <https://doi.org/10.1007/s00221-020-05832-9>

Hendricks, A.E. & **Adlof, S.M.** (2020). Production of morphosyntax within and across different dialects of American English. *Journal of Speech, Language, and Hearing Research*, 63(7), 2322-2333. https://doi.org/10.1044/2020_JSLHR-19-00244

Johari, K., & **Behroozmand, R.** (2020). Event-related Desynchronization of Alpha and Beta Band Neural Oscillations Predict Speech and Limb Motor Timing Deficits in Normal Aging. *Behavioural Brain Research*, 112763. <https://doi.org/10.1016/j.bbr.2020.112763>



Johnson, L. P., Sangtian, S., Johari, K., Behroozmand, R., & Fridriksson, J. (2020). Slowed Compensation Responses to Altered Auditory Feedback in Post-Stroke Aphasia: Implications for Speech Sensorimotor Integration. *Journal of Communication Disorders*, 106034.

<https://doi.org/10.1016/j.jcomdis.2020.106034>

Keator, L. M., Basilakos, A., Rorden, C., Elm, J., Bonilha, L., & Fridriksson, J. (2020). Clinical Implementation of Transcranial Direct Current Stimulation in Aphasia: A Survey of Speech-Language Pathologists. *American Journal of Speech-Language Pathology*, 1-13.

https://doi.org/10.1044/2020_AJSLP-19-00037

Lund, E., Miller, C., Douglas, W. M., & Werfel, K. L. (2020). Teaching vocabulary to improve print knowledge in preschool children with hearing loss. *SIG 1 Perspectives of the ASHA Special Interest Groups, ePub Ahead of Issue*. https://doi.org/10.1044/2020_PERSP-20-00023

Matchin, W., Basilakos, A., Stark, B. C., den Ouden, D. B., Fridriksson, J., & Hickok, G. (2020). Agrammatism and paragrammatism: a cortical double dissociation revealed by lesion-symptom mapping. *Neurobiology of Language*, 1-18. https://doi.org/10.1162/nol_a_00010

Matchin, W., & Wood, E. (2020). Syntax-sensitive regions of the posterior inferior frontal gyrus and the posterior temporal lobe are differentially recruited by production and perception. *Cerebral Cortex Communications*, 1(1), 1-12. <https://doi.org/10.1093/texcom/tgaa029>

Werfel, K. L., Bassard, S., & Squires, C. (2020). Nonverbal intelligence predicts performance of preschool children with hearing loss on norm-referenced language measures but not language sample analysis. *Ear and Hearing, OnlineFirst*, 18. <https://doi.org/10.1097/AUD.0000000000000897>

Werfel, K. L., Peek, L., Reynolds, G., & Bassard, S. (2020). Hearing screen failure among students with reading impairment: Rate and relation to specific reading deficits. *SIG 9 Perspectives of the ASHA Special Interest Groups, ePub Ahead of Issue*. https://doi.org/10.1044/2020_PERSP-19-00163

