

# Practice Based Experience: Looking at How Grocery Store Locations Impact Food Insecurity

South Carolina State Food Policy Quarterly Meeting

April 27, 2021

# Acknowledgments

- Sisters of Charity Foundation of SC staff, Board members, partners
- Dr. Melinda A. Merrell, RMHRC
- Carrie Draper, Ashley Page, and Zachary Herrnstadt, SC Food Policy Council

# Overarching Assumptions

- Poverty IS a challenge in our nation, state, and communities.
- We need a better definition in South Carolina of what defines and what causes\* poverty in our state.
- The final product should be accessible to all.

# Poverty in South Carolina

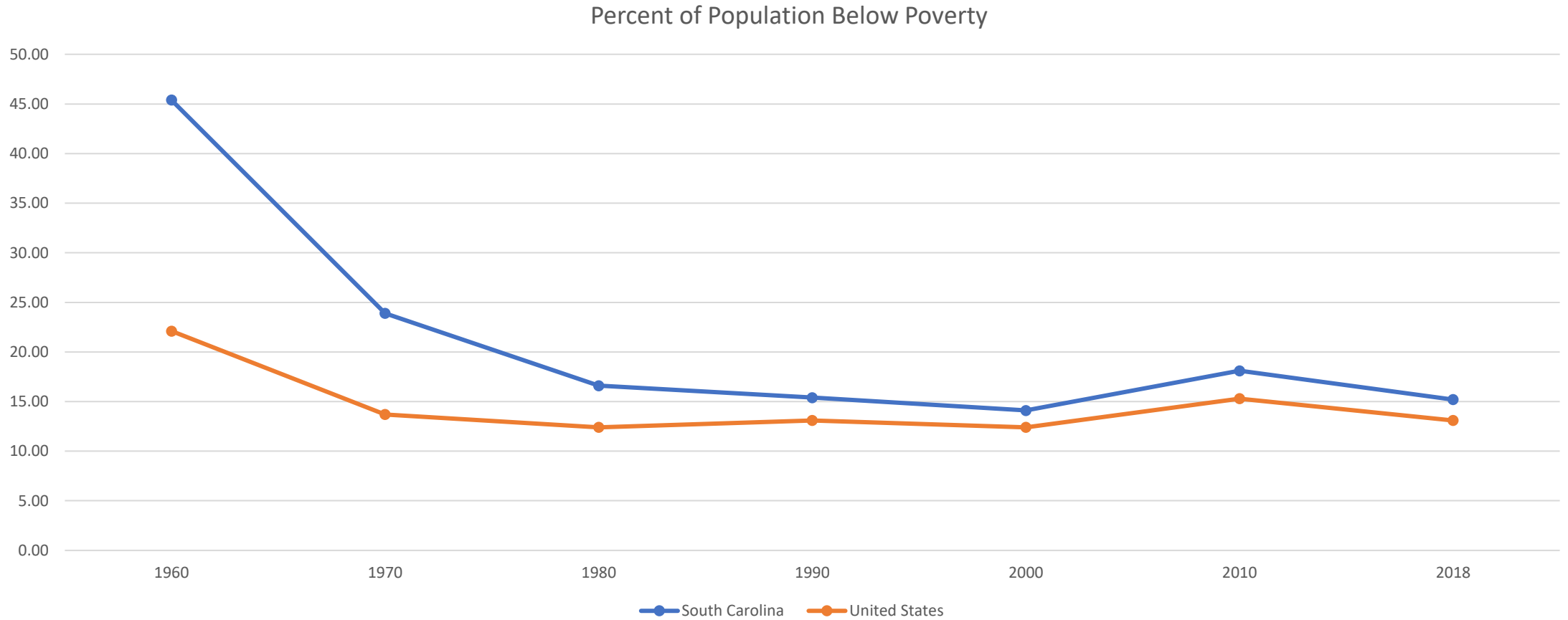


Figure 1

# Social Determinants of Health

Economic Stability	Neighborhood and Physical Environment	Education	Food	Community and Social Context	Health Care System
Employment	Housing	Literacy	Hunger	Social integration	Health coverage
Income	Transportation	Language	Access to healthy options	Support systems	Provider availability
Expenses	Safety	Early childhood education		Community engagement	Provider linguistic and cultural competency
Debt	Parks	Vocational training		Discrimination	Quality of care
Medical bills	Playgrounds	Higher education		Stress	
Support	Walkability				
	Zip code / geography				

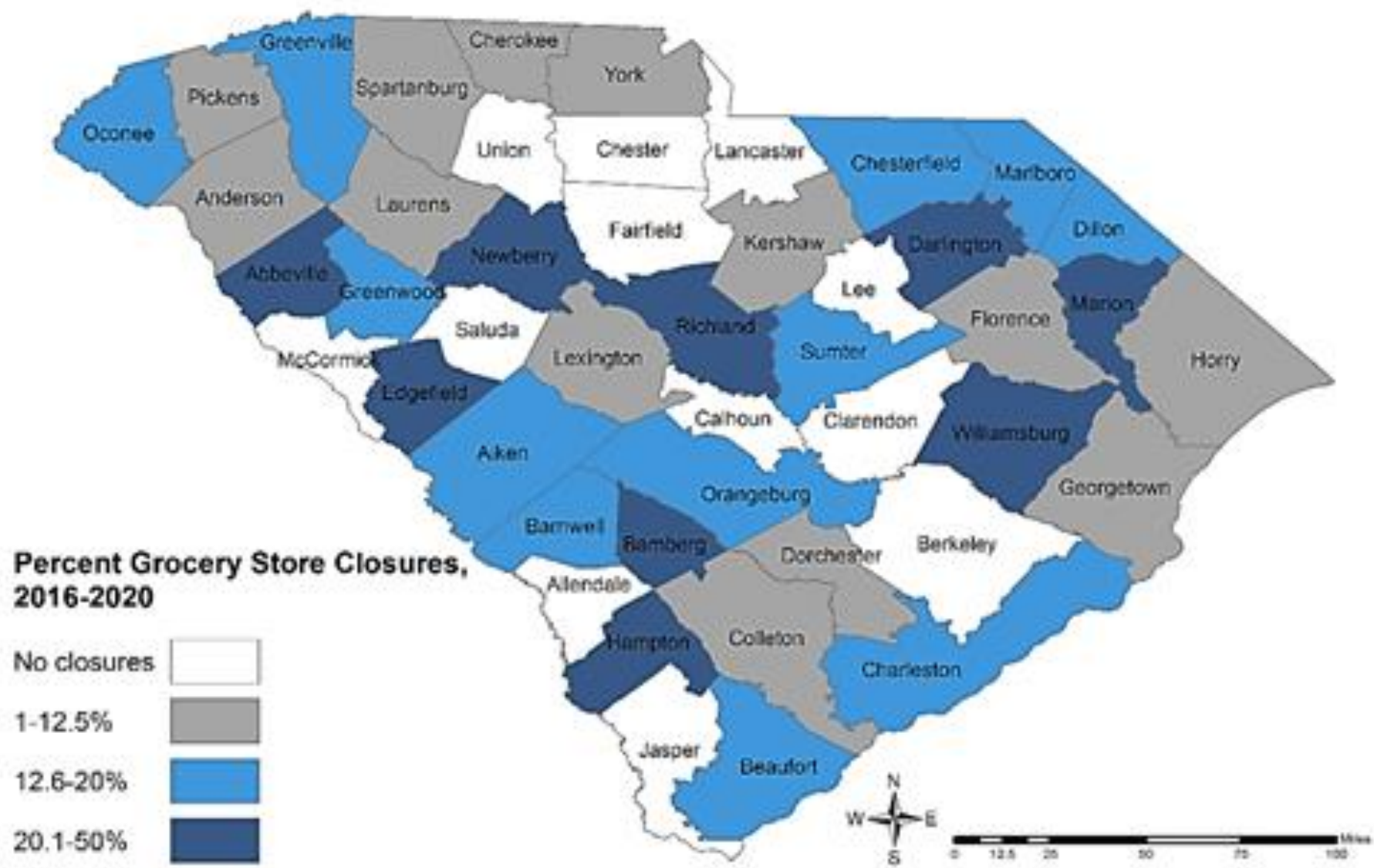
**Health Outcomes**  
 Mortality, Morbidity, Life Expectancy, Health Care Expenditures, Health Status, Functional Limitations

# Food Insecurity

- Economic condition defined by lack of access to enough food to consistently support a household's nutritional needs

<b>S.C. Food Insecurity Rates</b>	
2019	10.8%
2020 Projected	12.5%

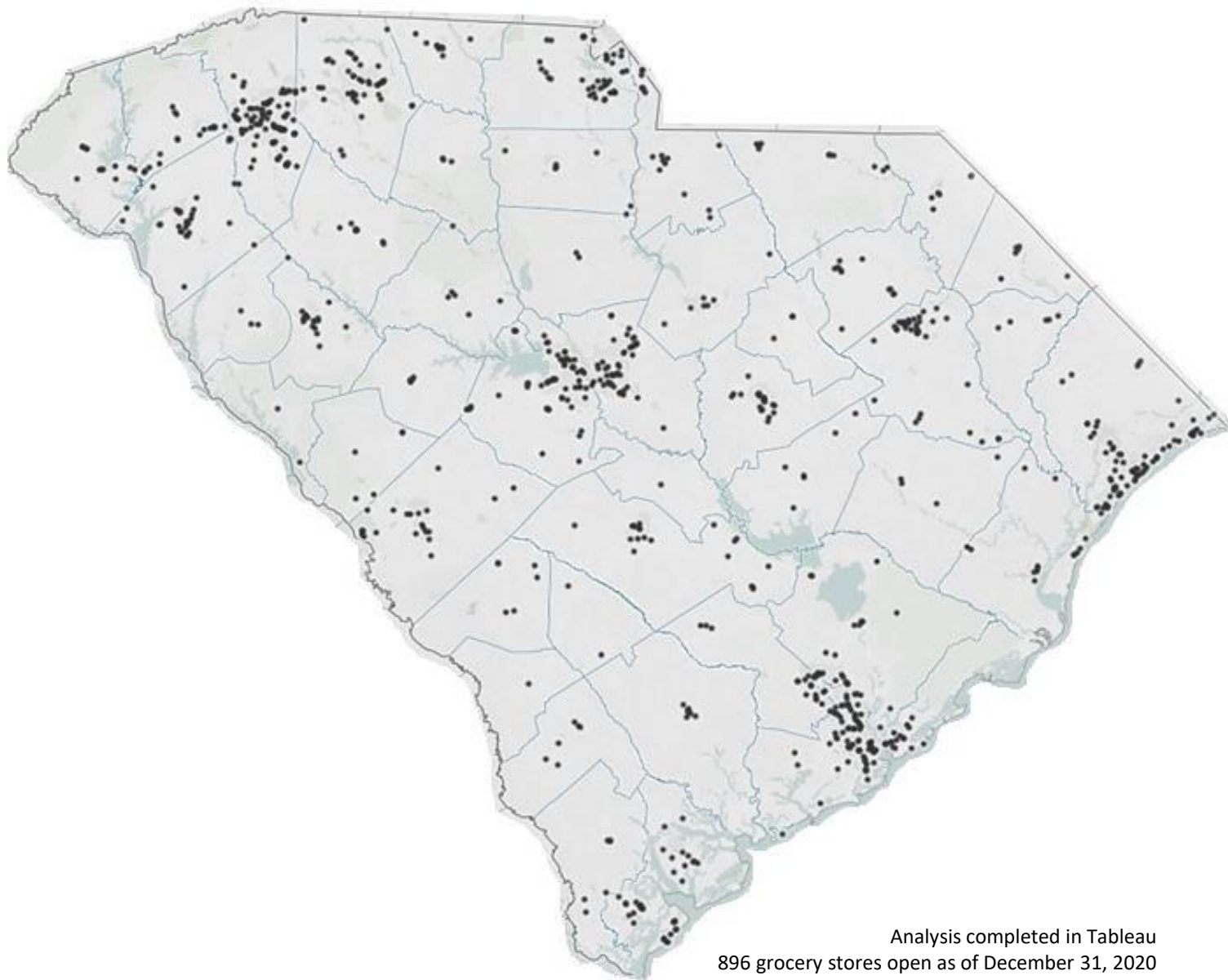
Source: Feeding America 2019-2020



# Grocery Store Locations Impacting Food Insecurity

- Identified all available grocery stores in South Carolina as of December 2020.
- Dataset: Data Axle Reference Solutions
- Excluded any gas stations, convenience stores





Analysis completed in Tableau  
896 grocery stores open as of December 31, 2020

# Example Dataset

FIPS	County	% Population 18 years and younger	% Population 65 and older	% White	% Black/African American	% American Indian and Alaska Native	% Asian	% Hispanic or Latino (of any race)	Median Income	# Closed Grocery Stores Since 2016	Total Grocery Stores 2020	Rank For Grocery Store Closures	2018 Food Insecurity Rate	2018 Child Food Insecurity Rate	2018 # of Food Insecure Persons	2019 Overall Food Insecurity Rate	2019 Child Food Insecurity Rate	2020 Projected Overall Food Insecurity Rate	2020 Projected Child Food Insecurity Rate
45079	Richland	21.5%	12.3%	44.9%	46.9%	0.2%	2.9%	5.2%	\$54,767	12	58	1	11.2%	13.5%	45,630	9.4%	14%	11.8%	18.2%

Sources:

American Community Survey 2015-2019;  
 Data Axle Reference Solutions-Author Analysis;  
 Feeding America 2018-2020

# Future Steps

- Datasets can be used to look at racial/ethnic compositions in comparison to grocery store by county
- Look at the gaps where potential grocery stores can be built for communities to have better access to healthy food options
- Advocate for children suffering from food insecurity

Thank You!

**Allyson Malbouf**  
**MPH Candidate 2021**

[amalbouf@email.sc.edu](mailto:amalbouf@email.sc.edu)

Graduate Assistant

Rural & Minority Health Research Center  
University of South Carolina

# References

- American Community Survey, 2015-2019.
- Bradshaw, T. (2007). Theories of Poverty and Anti-Poverty Programs in Community Development. *Community Development*. 3(1), 7-25.
- Brady, D. (2019). Theories of the Causes of Poverty. *Annual Review of Sociology*, 45, 155-175.
- Feeding America (2021). The Impact of Coronavirus on Food Insecurity. Retrieved from <https://feedingamericaaction.org/resources/state-by-state-resource-the-impact-of-coronavirus-on-food-insecurity/>
- Merrell, M., Malbouf, A., Benavidez, G., Phillips, C., & Waites, D. (2020). South Carolina: Structural Factors Associated with Poverty. Sisters of Charity Foundation of South Carolina.
- Smeeding, T. (2014). Chapter 6: Poverty Measurement. Institute for Research on Poverty. Retrieved from <https://www.irp.wisc.edu/wp/wp-content/uploads/2018/05/dp142414.pdf>.